

# KIRIRI GARDEN HOTEL

2025 PROFILE



**KIRIRI GARDEN  
HOTEL**

Redefining african hospitality

---

---

✦

# TABLE OF CONTENTS

## 01 — ABOUT US

Location  
Our Values  
Our Philosophy  
Our Services

## 03 — FACILITIES

Restaurants & Bars  
Meetings and Conferences  
Banquets

## 02 — OUR ROOMS

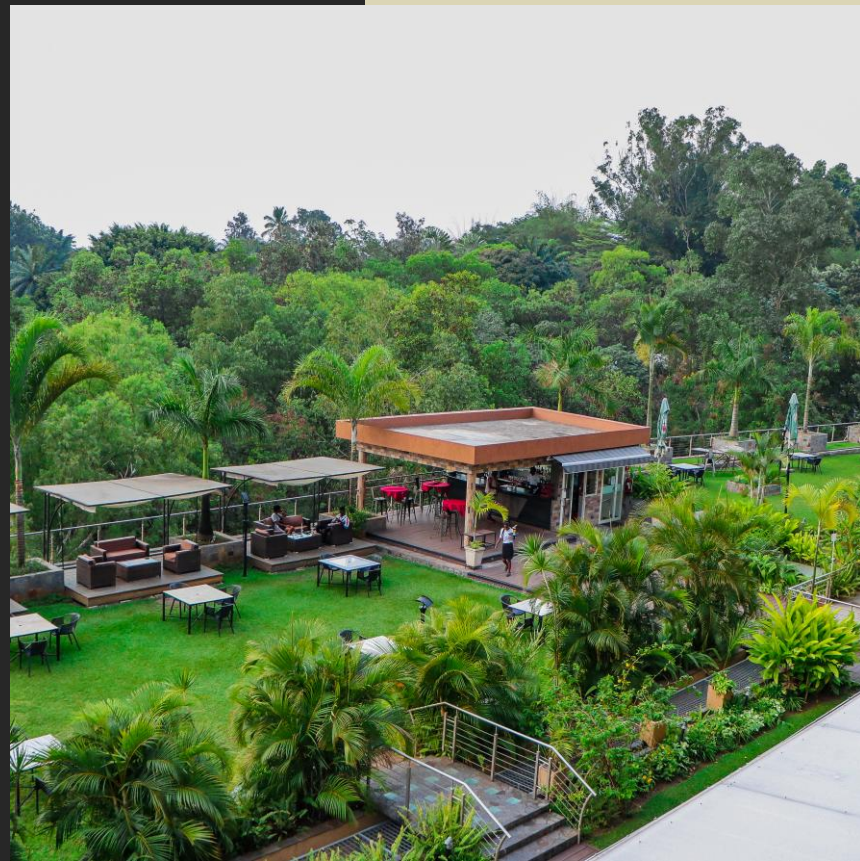
Standard rooms  
Duplex suites  
Executive suites  
Presidential suites

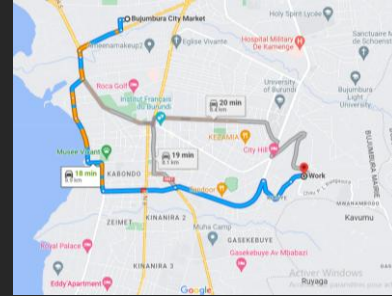
## 04 — WELLNESS

Gym and Swimming pool  
Spa & Massages  
Fitness classes

# ABOUT US

The property features 85 bedrooms including 19 serviced apartments. Our rooms are tastefully designed, complete with state of the art amenities including complimentary internet, Smart TV with international and satellite channels, in-room safe, a large workspace, and room service.





## LOCATION

Situated in Bujumbura's exclusive Kiriri neighborhood, a stones throw away from the center of town and overlooking Lake Tanganyika . Kiriri Garden offers a relaxing and safe location for guests traveling for leisure and business

# OUR VALUES

01



## PEOPLE-CENTRED

We strive to create an environment, relationships, and a business where respect for each other is at the core - where our clients, employees, suppliers, and partners feel respected and can thrive.

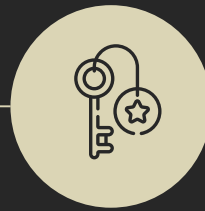
02



## QUALITY & PROFESSIONALISM

We insist on walking the talk and holding ourselves to the highest standards so that we can deliver what we promised to our clients - nothing below excellence.

03



## COMMUNITY & PARTNERSHIPS

No one can do it alone. We believe is collaboration and strategic partnerships, that not only benefit our client and our business but also the community around us.

04



## ACCOUNTABILITY & TRANSPARENCY

The foundation of our business is built on honesty and integrity which we ensure in all that we do, so to foster trust with our clients and all those with whom we work.

---

# OUR PHILOSOPHY



## EMPLOYEES

---

"We are proud of our hotel, but we are even more proud of our people. They are the ones who take care of all the little things that add up to a big difference for every guest on every stay.

Successful corporations are built around people who function as a loyal team. Our employees share in the common vision of our hotel's Mission.





---

# OUR PHILOSOPHY



## CUSTOMERS

---

Our customers are the foundation of our business. Our Management System is designed to generate superior customer satisfaction at every level

---

# OUR PHILOSOPHY



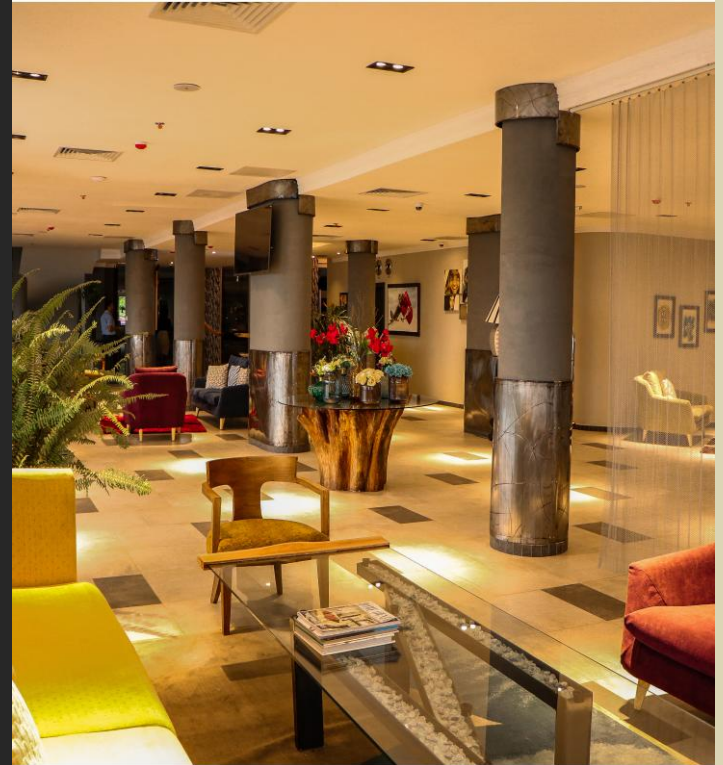
## SERVICES

---

Kiriri Garden hotel is the premier event destination in Bujumbura in unforgettable amazing views from the 6th Floor.

Our Events team will work with you to create a custom event, which leaves your guests with a memorable experience.

In order to maintain a leadership position in a competitive market. Service Excellence for our customers is critical to the successful management of our hotel.





---

# OUR ROOMS



## STANDARD

Our Standard Rooms are designed as an ideal space for work and relaxation. All our rooms are chic and contemporary, with the latest amenities including Smart Tv, Wi-Fi, safe, and minibar. | Room size: 30m<sup>2</sup>| number of Rooms: 66



## DUPLEX SUITE

Our Duplex Suite is perfect for anyone looking to have an extended stay with us or travelling with family. The suite is chic and contemporary featuring a mezzanine bedroom, kitchenette, and living room. Size 45m<sup>2</sup>| number of Suites: 19

---

# OUR ROOMS



## EXECUTIVE SUITE

Our Executive Suite is designed for those who require both comfort and functionality to efficiently handle professional matters while travelling. This contemporary suite is divided into a lounge area and sleeping area complete with a king size bed, opulent bathroom, Smart TV and mini bar. The lounge area serves as the perfect office away from the office with a full size desk, laptop size safe, and high speed internet. Suite size: 60m<sup>2</sup> | number of Suite: 3

---

# OUR ROOMS



## PRESIDENTIAL SUITE

---

The Kiriri Garden Presidential Suite is designed with the utmost luxury in mind, and perfect for those who require total security, privacy and comfort. The suite comes with an expansive living space, stunning views, and all the modern amenities you require featuring a formal dining room, living room, and master bathroom with a jacuzzi. The suite has its own private floor, with seven support/protocol single rooms ideal for those travelling in large groups. Suite size: 120m<sup>2</sup> | number of suites: 1

# FACILITIES

---

Whether it is a private business meeting, a corporate conference, or a prestigious gala dinner, the Kiriri garden Hotel is truly inspirational.

We can host any event as simple as an intimate dinner or business meeting to an extravagant reception.

Our meeting rooms can accommodate anywhere from 2 to 200 guests for a seated event and 200-350 or a few more for standup receptions within 9 Function spaces





---

# RESTAURANT & BAR

In addition to the 24-hour room service, the hotel introduces different cuisines and dining options to cater to all tastes.



Our lake view terrace restaurant and our Rooftop bar offers a wide choice of foods and drinks



---

# MEETINGS AND EVENTS

All meeting rooms are equipped with the latest sound systems, data show, overhead and slide projectors, screens, TV screens, white boards.

Features:

Max Number of People for an Event: 200

Number of Event/Function Spaces: 9

Special Features:

- \* Roof-top access - Panoramic View of Bujumbura and Lake Tanganyika
- \* Free Parking for events
- \* Amazing cuisine and Special menu creations
- \* Detail orientated team
- \* Full Bar/Lounge
- \* On-Site Catering Service
- \* Wireless Internet/Wi-Fi



# MEETINGS AND CONFERENCES

## BOARDROOM

is equipped with the latest audio/video equipment, overhead and slide projectors, microphones, TV screens, white boards



## EXECUTIVE CONFERENCE

can accomadate 200 people max, and it can be divided into two. With all the latest features.

We have other Meeting Rooms named after Burundi Provinces: GITEGA | NGOZI | KIRUNDO

# CAPACITY

Name of the rooms	Theatre	Classroom	U-Shape 2   1	Hallow square	Board room	Banquet	Cabaret	Cocktail	Area
NGOZI	35	28	36   18	36	24	24	-	-	79 m <sup>2</sup>
GITEGA	35	28	36   18	36	24	24	-	-	79 m <sup>2</sup>
KIRUNDO	30	25	20   10	20	14	12	-	-	60 m <sup>2</sup>
BOARDROOM	-	-	10	-	10	-	-	-	29 m <sup>2</sup>
Ex. CONFERENCE 1	80	60	48	60	34	36	24	-	135 m <sup>2</sup>
Ex. CONFERENCE 2	50	40	38	40	28	24	16	-	90 m <sup>2</sup>
FULL Ex. CONFERENCE	150	100	80	100	58	60	40	-	225 m <sup>2</sup>
5th FLOOR	60	45	30	45	60	100	70	300	325 m <sup>2</sup>
GARDEN 1	100	-	-	-	-	70	60	180	275 m <sup>2</sup>
GARDEN 2	150	-	-	-	-	100	90	270	380 m <sup>2</sup>
FULL GARDEN	250	-	-	-	-	170	15	450	655 m <sup>2</sup>

# BANQUETING



## KIRIRI GARDEN HOTEL

is the place to meet and celebrate: events assume a special distinction

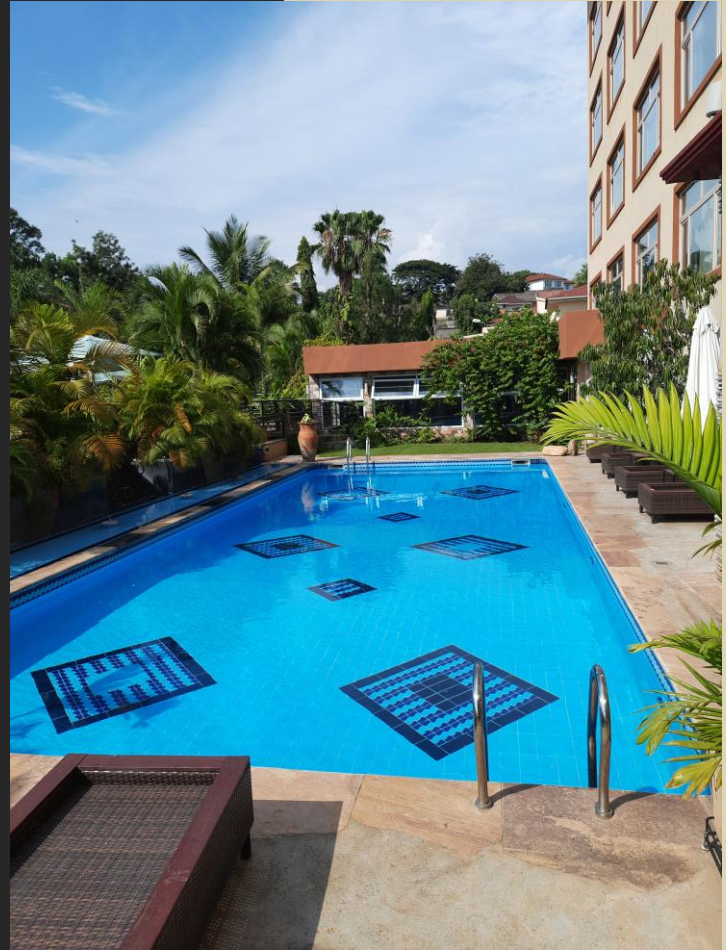
-a grand banquet or less formal luncheon, private party, dinner or wedding. Whether for 4 or 350 people, the organization combines detail and creativity to ensure that every function is well remarked and happily remembered.





# WELLNESS CENTER

Fitness facilities and activities to start off your day; and steam, sauna and swimming pool to wind down at the end of a fun filled day are all at your service. And why not enjoy a professional massage.





# GYM, SPA & MASSAGE



Open hours: Swimming pool : 06am-07pm | Spa & Massage: 11 am-08 pm | Gym Room: 06am - 08 pm

---

# TESTIMONIALS



C'est toujours un plaisir de passer des bon moments à l'Hotel Kiriri Garden. Le cadre y est convivial avec un personnel attentionné et tres accueillant.

BY

AMB. WILLY NYAMITWE



" This is to express the amazing stay I had with my delegates, the ambiance, the Food, the Service and front reception gave us a great service "

BY

ETSEGENET BEZABIH YIMENU  
Ethiopian Amb.

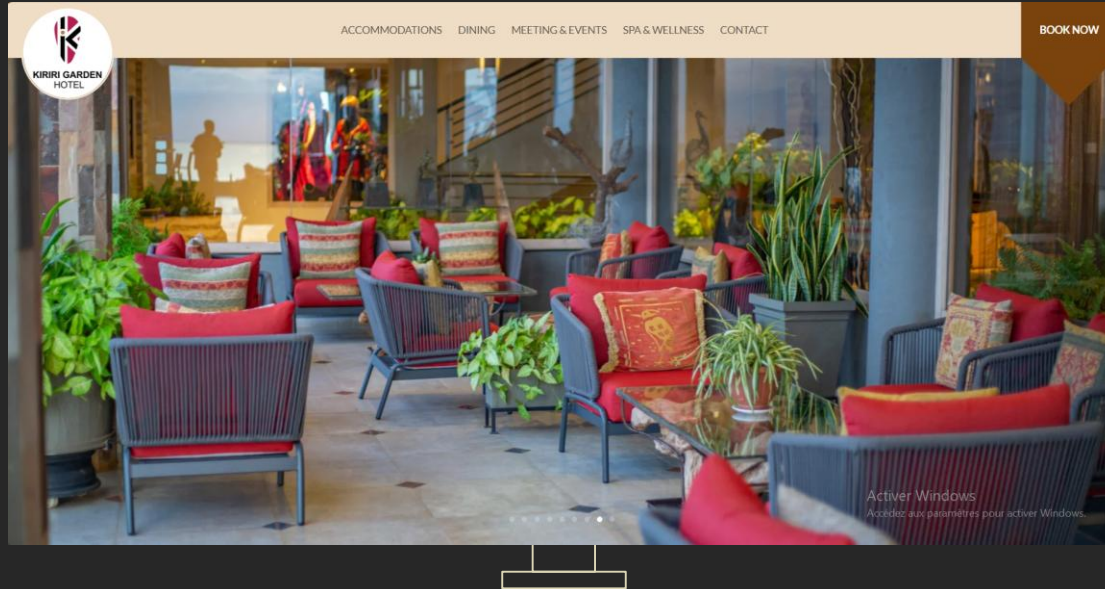


Bel accueil, bel Hotel, séjour agréable pour une première visite dans la capitale économique du Burundi. Félicitation au Directeur du Kiriri garden Hotel. Souvenirs inoubliables

BY

AMB. SILAS METCH

# OUR WEBSITE



<https://www.kiririgardenhotel.com>

# THANKS

---

**Do you have any questions?**

info@kiririgardenhotel.com

+25771 11 12 13

kiririgardenhotel.com

---



Bookings: +257 79 10 51 11   +257 71 76 18 70 | 12th Avenue  
Bélvédère, Kiriri Bujumbura Burundi